

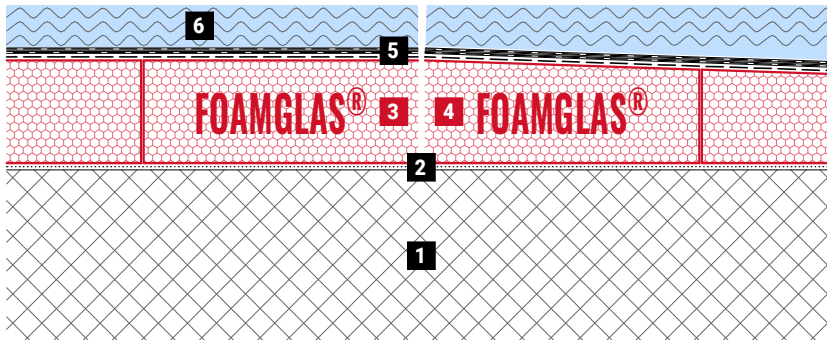
Compact Flat Roof with blue roof with water tank on reinforced concrete structure

FOAMGLAS® with hot bitumen for water on roof system



Schematic drawing

System 4.5.30



1. Concrete roof deck
2. Primer coat
3. FOAMGLAS® laid in hot bitumen
4. FOAMGLAS® TAPERED laid in hot bitumen
5. Two layers of bituminous waterproofing membranes, top layer suitable for ponding water
6. Water tank

FOAMGLAS® product properties

Waterproof – Resistant to vermin – High compressive strength – Non-combustible – Impervious to water vapour – Dimensionally stable – Acid resistant – Easily cut to shape – Ecological

Advantages of the FOAMGLAS® system

- **Quality** : Systems with high quality materials. Quality management by systematic site inspections and professional consulting.
- **Cost efficiency** : The high durability preserves maximum value and guarantees minimal maintenance costs.
- **Sustainability** : Optimum insulation and protection against moisture for generations.
- **Safety** : Compact, fully bonded insulation system preventing large-scale damages and renovations in the event of a leak caused by a puncture of the roofing membrane.
- **Functionality** : Insulation and vapour barrier in one single functional layer. Flexible and easy installation of a gradient through prefabricated tapered slabs.

Recommendations for architect

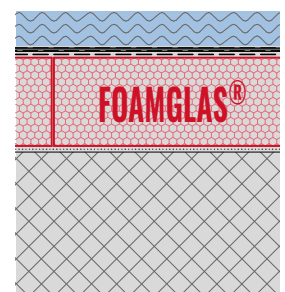
Normally used:

FOAMGLAS® T3+, T4+, S3, F (60 x 45 cm),
FOAMGLAS® TAPERED T3+, T4+, S3, F (60 x 45 cm).

- Insulation thickness to meet building regulations or the project-specific U-value requirements. Please also consult our product overview. It contains information on all our products, their field of application and their specific properties.
- For the use of FOAMGLAS® under load bearing conditions, the project / structural engineer must check the admissible loads.
- The flatness and the general conditions of the substrate are important criteria when using FOAMGLAS® (see TG1). Please contact our Technical Department to verify the criteria for the substrate.
- For a technically correct implementation, relevant standards and guidelines must be observed.

Solutions for technical details and specification clauses on request. Further proposals and solutions are available any time from our technical consultants. Updated: **26/07/2022**.

We explicitly reserve the right to change the technical specifications. The current values can be found on our website under: www.foamglas.com>distibutors



Compact Flat Roof with blue roof with water tank on reinforced concrete structure

FOAMGLAS® with hot bitumen for water on roof system



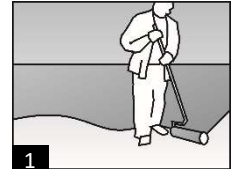
System 4.5.30

Installation instructions

- Apply bituminous primer with roller (or spraying equipment) on the clean and dry concrete surface, coverage ~ 0.3 l/m². (1)
- Apply the FOAMGLAS® slabs fully bonded to the substrate with hot bitumen poured from a bitumen can, with staggered and bitumen-filled butted joints. Coverage ~ 5.0 – 7.0 kg/m², dependent on the thickness of the insulation: Dip a short as well as a long side of the slab in the poured bitumen and press into position against already laid slabs. Surplus bitumen spilt at the side must be removed with the next slab in order to avoid irregularities. (2 / 3)
- Top coat of hot bitumen, coverage ~ 2.0 kg/m². Pour the hot bitumen and spread with the rubber spreader on the FOAMGLAS® surface. (4)
- Possible waterproofing variation: Apply two layers of bituminous waterproofing membranes covering the entire surface. First and second layer are torched on. Joints overlapping at least 100 mm, with staggered courses. Top layer of UV-resistant bituminous waterproofing membrane. (Further installation and waterproofing proposals with bituminous membranes or, for example, also with a combination of bituminous and synthetic membranes are available on request). Top layer of bituminous waterproofing suitable for ponding water. (5)

Recommendations for the contractor

- The build up and tolerances of the substrate have to be in accordance with relevant standards and guidelines.
- Substrate and ambient temperature should not be below + 5° C.
- Adequate measures should be taken in order to avoid any risks of damage by other contractors during construction.
- Protect sensitive components provided by other suppliers against blobs of hot bitumen and the effect of heat
- Please contact our technical consultants; they can help you by providing support or on-site assistance free of charge.



The technical guidelines for the application and the installation of FOAMGLAS® are based on historical experience and general site practice. They do not reflect individual examples. We therefore assume no liability as to the completeness and the suitability for a specific project. Furthermore, our liability and responsibility are subject to our general conditions of sale which are not extended either by this technical data sheet nor by the consulting of our technical sales representatives.

Pittsburgh Corning UK Limited
 31-35 Kirby Street,
 London, EC1N 8TE
 Phone +44 (0)20 7492 1731
 Fax +44 (0)20 7492 1730
 info@foamglas.co.uk