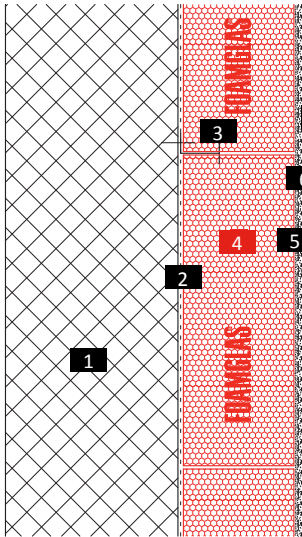


Interior wall insulation with fine finish

FOAMGLAS® with cold adhesive PC® 56

Schematic drawing

System 3.2.16



- 1) Solid wall (concrete/brickwork)
- 2) Primer coat
- 3) PC® F anchor Mechanical fastening
- 4) FOAMGLAS® bonded with PC® 56
- 5) Base coat of PC®74 A1
- 6) Reinforcing mesh PC®150
- 7) Fine finish PC® FINISH 0

FOAMGLAS® product properties

Waterproof – Resistant to vermin – High compressive strength – Non-combustible – Impervious to water vapour – Dimensionally stable – Acid resistant – Easily cut to shape – Ecological

Advantages of the FOAMGLAS® system

- **Quality** : Systems with high quality materials. Quality management by systematic site inspections and professional consulting.
- **Cost efficiency** : The high durability preserves maximum value and guarantees minimal maintenance costs.
- **Sustainability** : Optimum insulation and protection against moisture for generations.
- **Safety** : Compact, fully bonded insulation system preventing damages due to condensate and mould. Cellular glass contains no toxic substances and, in case of fire, does not develop fumes or toxic gases.
- **Functionality** : Insulation, vapour and capillary barrier in one single functional layer.

Recommendations for architect

Normally used:

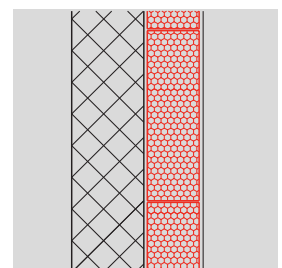
FOAMGLAS® T3+ (120 x 60 cm),

FOAMGLAS® T3+, T4+ (60 x 45cm).

- Insulation thickness to meet building regulations or the project-specific U-value requirements. Please also consult our product overview. It contains information on all our products, their field of application and their specific properties.
- The flatness and the general conditions of the substrate are important criteria when using FOAMGLAS® (see TG1). Please contact our Technical Department to verify the criteria for the substrate.
- For a technically correct implementation, relevant standards and guidelines must be observed.

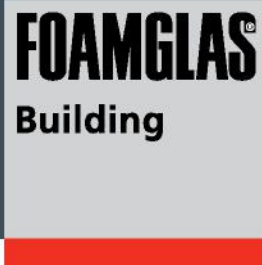
Solutions for technical details and specification clauses on request. Further proposals and solutions are available any time from our technical consultants. **Updated: 1/1/2019.**

We explicitly reserve the right to change the technical specifications. The current values can be found on our website under: uk.foamglas.com/en/building



Interior wall insulation with fine finish

FOAMGLAS® with cold adhesive PC® 56



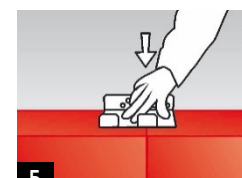
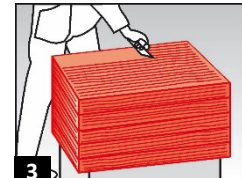
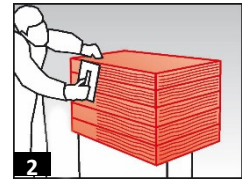
System 3.2.16

Installation instructions

- Primer PC® EM or emulsion PC® 56 diluted with 10 parts of water, applied with a roller on the dust-free surface, coverage ~ 0.3 l/m². (1)
- Apply the FOAMGLAS® slabs fully bonded to the substrate with cold adhesive PC® 56, with staggered and joints tightly butted and filled with adhesive.
- Coverage ~ 3.5 – 4.5 kg/m², dependent on the thickness of the insulation:
- Apply the cold adhesive PC® 56 with a notched trowel (tooth size ~ 8 – 10 mm) on two sides of the slabs (in stacks). Apply cold adhesive to the entire surface of the slab and push diagonally into the open corner. Remove the squeezed-out adhesive with a trowel when slightly hardened. (2 / 3 / 4)
- For ceiling heights > 2.50 m: mechanical fastening of the FOAMGLAS® slabs (during application) with PC® F anchors, consumption: 2 pieces /m². (5)
- Remove irregularities of the insulation surface by grinding with a FOAMGLAS® slab or preferably with an emery board. Remove dust from the FOAMGLAS® surface. (6)
- Allow waiting time of ~ 3 days (dependent on ambient temperature and humidity).
- Apply a base coat of PC® 74 A1 with a stainless steel trowel, coverage ~3.0 – 7.0 kg/m². Embed the alkali-resistant reinforcing mesh PC® 150 (overlapping joints ~ 100 mm) flatly and evenly, then smooth the surface. (7)
- Allow waiting time of ~ 3 – 5 days (dependent on ambient temperature and humidity).
- Apply the fine finish PC® FINISH 0 with a stainless steel trowel. Coverage: ~2.0 kg/m².
- Wet the drying surface and smooth off with a special trowel or when dry with sandpaper.
- Dispersion paint and dispersion silicate paint can be used on it.

Recommendations for the contractor

- The build-up and tolerances of the substrate must be in accordance with relevant standards and guidelines.
- Substrate and ambient temperature should not be below + 5° C.
- Sensitive components provided by other suppliers must be protected against blobs of adhesive.
- Please contact our technical consultants; they can help you by providing support or on-site assistance free of charge.



The technical guidelines for the application and the installation of FOAMGLAS® are based on historical experience and general site practice. They do not reflect individual examples. We therefore assume no liability as to the completeness and the suitability for a specific project. Furthermore, our liability and responsibility are subject to our general conditions of sale which are not extended either by this technical data sheet nor by the consulting of our technical sales representatives.

Pittsburgh Corning UK Limited
 31-35 Kirby Street,
 London, EC1N 8TE
 Phone +44 (0)20 7492 1731
 Fax +44 (0)20 7492 1730
 info@foamglas.co.uk