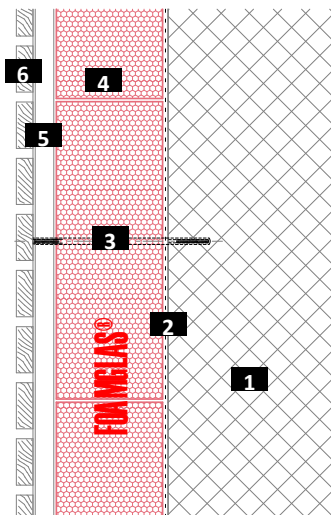


## Ventilated façade with timber cladding

FOAMGLAS® with cold adhesive PC® 56 and spacer bolts

### Schematic drawing

### System 2.1.3



- 1 Solid wall (concrete / brickwork)
- 2 Primer coat
- 3 Spacer screws
- 4 FOAMGLAS® bonded with PC® 56
- 5 Timber substructure
- 6 Timber cladding

#### FOAMGLAS® product properties

Waterproof – Resistant to vermin – High compressive strength – Non-combustible – Impervious to water vapour – Dimensionally stable – Acid resistant – Easily cut to shape – Ecological

#### Advantages of the FOAMGLAS® system

- Quality: Systems with high quality materials. Quality management by systematic site inspections and professional consulting.
- Cost efficiency: The high durability preserves maximum value and guarantees minimal maintenance costs.
- Sustainability: Optimum insulation and protection against moisture for generations.
- Safety: Compact, fully bonded insulation system preventing damages caused by damp either through condensate or water penetration.
- Functionality: Insulation as well as vapour, radon and capillary barrier in one single functional layer.

#### Recommendations for architect

Normally used:

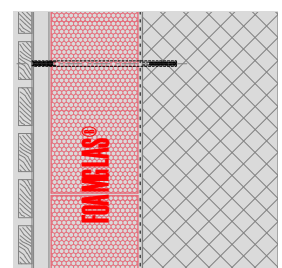
FOAMGLAS® T3+ (120 x 60 cm),

FOAMGLAS® T3+, W+F (60 x 45 cm).

- Insulation thickness to meet building regulations or the project-specific U-value requirements. Please also consult our product overview. It contains information on all our products, their field of application and their specific properties.
- The flatness and the general conditions of the substrate are important criteria when using FOAMGLAS® (see TG1). Please contact our Technical Department to verify the criteria for the substrate.
- For technically correct implementation, relevant standards and guidelines must be observed.
- Constructions on sites with a high groundwater table or high water pressure require specialist advice. Please contact our technical staff.

Solutions for technical details and specification clauses on request. Further proposals and solutions are available any time from our technical consultants. **Updated: 01/01/2019.**

We explicitly reserve the right to change the technical specifications. The current values can be found on our website under: [uk.foamglas.com/en/building](http://uk.foamglas.com/en/building)



## Ventilated façade with timber cladding

FOAMGLAS® with cold adhesive PC® 56 and spacer bolts

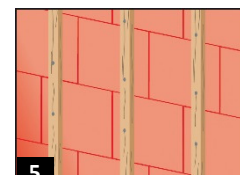
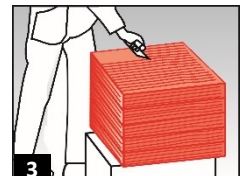
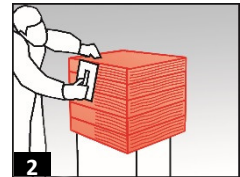
### System 2.1.3

#### Installation instructions

- Primer PC® EM or emulsion PC® 56 diluted with 10 parts of water, applied with roller on the dust-free surface. Coverage ~ 0.3 l/m<sup>2</sup>. (1)
- Apply the FOAMGLAS® slabs fully bonded to the substrate, with staggered and tight-butted joints filled with cold adhesive PC® 56. Coverage ~ 3.5 – 4.5 kg/m<sup>2</sup>, dependent on the thickness of the insulation:
- Apply cold adhesive PC® 56 with a notched trowel (tooth size ~ 8 – 10 mm) to two sides of the FOAMGLAS® slab (in stacks). Apply cold adhesive to the entire surface of the slab and push diagonally into the open corner. Remove squeezed-out adhesive with a trowel when slightly hardened.
- Fixing aid and mechanical fastening of the FOAMGLAS® slabs in the base area and at lintels (e. g. support bracket).
- Remove irregularities of the insulation surface with a FOAMGLAS® slab or preferably with an emery board. Remove dust from the FOAMGLAS® surface.
- Mechanical fastening of the timber substructure with spacer screws. Number and size of the screws according to the specifications of the supplier. (5)
- Seal the FOAMGLAS® penetrations with cold adhesive PC® 56 or PITTSEAL® 444.
- Install the timber cladding.

#### Recommendations for the contractor

- The build up and tolerances of the substrate must be in accordance with relevant standards and guidelines.
- Substrate and ambient temperature should not be below + 5° C.
- The joints of the top layer of the last course must be protected against driving rain in order to prevent water penetration or washing out of the cold adhesive.
- Protect sensitive components provided by other suppliers against blobs of adhesive.
- Please contact our technical consultants; they can help you by providing support or on-site assistance free of charge.



The technical guidelines for the application and the installation of FOAMGLAS® are based on historical experience and general site practice. They do not reflect individual examples. We therefore assume no liability as to the completeness and the suitability for a specific project. Furthermore, our liability and responsibility are subject to our general conditions of sale which are not extended either by this technical data sheet nor by the consulting of our technical sales representatives.

Pittsburgh Corning UK  
Limited  
31-35 Kirby Street,  
London, EC1N 8TE  
Phone +44 (0)20 7492 1731  
Fax +44 (0)20 7492 1730  
info@foamglas.co.uk