

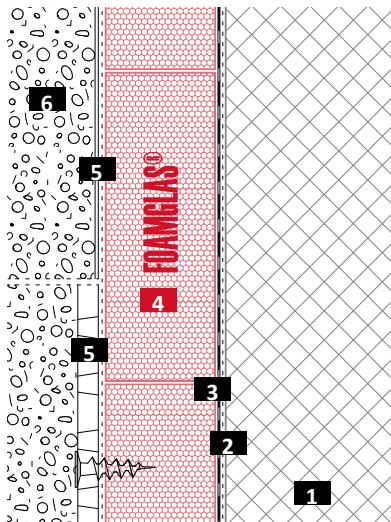
Wall insulation on concrete with waterproofing membrane

FOAMGLAS® with cold adhesive PC® 56



Schematic drawing

System 1.2.7



- 1 Concrete wall
- 2 Primer coat
- 3 Bitumen compatible waterproofing membrane
- 4 FOAMGLAS® bonded with PC® 56
- 5 Protection layer/cavity drainage membrane or a torch applied bituminous waterproof membrane & protection layer
- 6 Soil/backfill

FOAMGLAS® product properties

Waterproof – Resistant to vermin – High compressive strength – Non-combustible – Impervious to water vapour – Dimensionally stable – Acid resistant – Easily cut to shape – Ecological

Advantages of the FOAMGLAS® system

- **Quality** : Systems with high quality materials. Quality management by systematic site inspections and professional consulting.
- **Cost efficiency** : The high durability preserves maximum value and guarantees minimal maintenance costs.
- **Sustainability** : Optimum insulation and protection against moisture for generations.
- **Safety** : Compact, fully bonded insulation system preventing damages caused by damp either through condensate or water penetration.
- **Functionality** : Insulation as well as vapour, radon and capillary barrier in one single functional layer.

Recommendations for architect

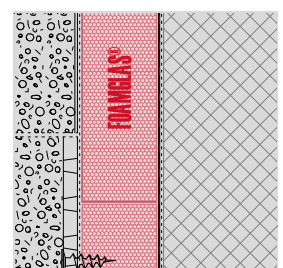
Normally used:

FOAMGLAS® READY T4+, T3+ (60 x 45 cm).

- Insulation thickness to meet building regulations or the project-specific U-value requirements. Please also consult our product overview. It contains information on all our products, their field of application and their specific properties.
- The flatness and the general conditions of the substrate are important criteria when using FOAMGLAS® (see TG1). Please contact our Technical Department to verify the criteria for the substrate.
- For technically correct implementation, relevant standards and guidelines must be observed.
- Constructions on sites with a high groundwater table or high water pressure require specialist advice. Please contact our technical staff.

Solutions for technical details and specification clauses on request. Further proposals and solutions are available any time from our technical consultants. **Updated: 01/03/2021.**

We explicitly reserve the right to change the technical specifications. The current values can be found on our website under: www.foamglas.com > distributors



Wall insulation on concrete with waterproofing membrane

FOAMGLAS® with cold adhesive PC® 56



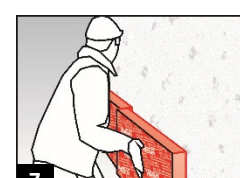
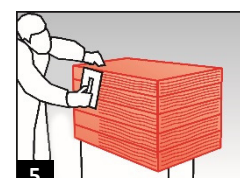
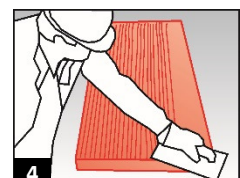
System 1.2.7

Installation instructions

- Apply bituminous primer coat with a roller on dust-free surface, coverage $\sim 0.3 \text{ l/m}^2$. (1)
- Apply bitumen compatible waterproofing membrane with sanded surface (one or two layers dependent on the level of the water table and on relevant standards). (2)
- Fixing aid and mechanical fastening of the FOAMGLAS® in the base area and at lintels (e. g. support bracket).
- The boards should be adhered to the surface of the substrate using PC® 56 adhesive, applied to the lower white fleece facing of the board.
- Depending on the condition of the substrate either:
 - Apply FOAMGLAS® spot-bonded with staggered and tight-butted joints filled with cold adhesive PC® 56. (8 spots/board, coverage $\sim 2.0 - 3.0 \text{ kg/m}^2$) (3). Apply cold adhesive PC®56 on one short and one long side of the (installed) FOAMGLAS®. (5) OR (6)
 - OR
 - In case the substrate is flat (unevenness maximum 3 mm at a length of 120 cm) apply FOAMGLAS® fully bonded with either a gauging or notched trowel (tooth size $\sim 8 - 10 \text{ mm}$) to the substrate, with staggered and tight-butted joints filled with cold adhesive PC® 56. Coverage $\sim 3.5 - 4.5 \text{ kg/m}^2$, dependent on the thickness of the insulation.
- Apply cold adhesive PC® 56 to the surface of the board. (4)
- Apply cold adhesive PC® 56 on one short and one long side of the (installed) FOAMGLAS®. (5) OR (6)
- Push the FOAMGLAS® diagonally into the open corner. (7)
- Seal top exposed edge of the FOAMGLAS® with cold adhesive PC® 56 by using the flat side of a trowel on the FOAMGLAS® surface and spread evenly.
- Apply a protective / filtration / cavity drainage layer, or alternatively, torch a bituminous waterproofing membrane to the face of FOAMGLAS® & apply a protection layer. Backfill the excavation with great care.

Recommendations for the contractor

- The build up and tolerances of the substrate must be in accordance with relevant standards and guidelines.
- Substrate and ambient temperature should not be below $+ 5^\circ \text{ C}$.
- The joints of the top layer of the last course must be protected against driving rain in order to prevent water penetration or washing out of the cold adhesive. This should be done at each interruption of work and at the end of each day.
- Please contact our technical consultants; they can help you by providing support or on-site assistance free of charge.



The technical guidelines for the application and the installation of FOAMGLAS® are based on historical experience and general site practice. They do not reflect individual examples. We therefore assume no liability as to the completeness and the suitability for a specific project. Furthermore, our liability and responsibility are subject to our general conditions of sale which are not extended either by this technical data sheet nor by the consulting of our technical sales representatives.

Pittsburgh Corning
Europe S.A. / N.V.
FOAMGLAS® Distributors
Albertkade 1
B-3980 Tessenderlo
Belgium