



FOAMGLAS® TAPERED S3

Page: 1

Date: 01.08.2021

Supersedes: 12.03.2018

www.foamglas.com



FOAMGLAS® TAPERED S3 consists of FOAMGLAS® S3 slabs which are tapered across their width, or sometimes their length. A central arrow stamped onto the top surface indicates the direction of fall.

Form of delivery

length x width [mm]	600 x 450							
average thickness [mm]	60	70	80	90	100	110	120	130
length x width [mm]	600 x 450							
average thickness [mm]	140	150	160	170	180	190	200	

Standard angles of inclination:

1.1%, 1.3%, 1.7%, 2.0%, 2.8%, 3.0%, 3.3%, 4.0%, 4.4%, 5.0%, 5.6%, 6.7%.

Other dimensions and thicknesses are available on request.

General FOAMGLAS® Cellular Glass Insulation characteristics

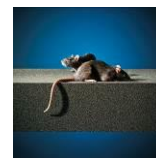
Description	: FOAMGLAS® Insulation is manufactured from specially graded recycled glass* and natural raw materials which are available in abundant supply (sand, dolomite, lime...). The insulation is totally inorganic, contains no ozone depleting propellants, flame resistant additives or binders. Without VOC or other volatile substances.
Reaction to fire (EN 13501-1)	: Material complying with Euroclass A1, non-combustible, no toxic fumes
Service temperature limits	: from -265°C to +430°C
Water vapour resistance (EN ISO 10456)	: $\mu = \infty$
Hygroscopicity	: zero
Capillarity	: zero
Melting point (cf DIN 4102-17)	: >1000 °C
Thermal expansion coefficient (EN 13471)	: $9 \times 10^{-6} \text{ K}^{-1}$
Specific heat (EN ISO 10456)	: 1000 J/(kg·K)
FOAMGLAS® characteristics	:



Time-tested thermal performance



Waterproof



Resistant to attack



High compressive strength



Acid resistant / chemical resistant



Non-combustible



Impervious to water vapour



Dimensionally stable



Ecological



Radon protection



FOAMGLAS[®] TAPERED S3

Page: 2

Date: 01.08.2021

Supersedes: 12.03.2018

www.foamglas.com

1. Product characteristics according to EN 13167¹⁾

Density ($\pm 10\%$) (EN 1602)	: 130 kg/m ³
Thickness, average (EN 823) ± 2 mm	: from 60 to 200 mm
Length (EN 822) ± 2 mm	: 600 mm
Width (EN 822) ± 2 mm	: 450 mm
Thermal conductivity (EN ISO 10456)	: $\lambda_D \leq 0,045$ W/(m·K)
Reaction to fire (EN 13501-1)	: Euroclass A1
Point load (EN 12430)	: PL $\leq 1,0$ mm
Compressive strength (EN 826 annexe A)	: CS ≥ 900 kPa
Bending strength (EN 12089)	: BS ≥ 500 kPa
Tensile strength (EN 1607)	: TR ≥ 200 kPa

¹⁾ CE-marking ensures conformity with the mandatory essential requirements of CPD as mentioned in EN 13167; within the CEN Keymark certification all mentioned characteristics are certified by an empowered, notified and accredited 3rd party.

2. Additional product characteristics

Thermal diffusivity at 0°C	: 4.1×10^{-7} m ² /sec
Flexural modulus of elasticity E	: 1200 MN/m ²
BRE Green Guide Rating	: A
Certificate natureplus	: 0406-1101-101-1
NBS plus	: yes
RIBA - CPD Assessed Material	: yes
Green Spec [®] Listed	: yes

3. Applications

- Tapered Insulation System with higher compressive strength
- Roofs
 - Balconies
 - Terraces
 - Walkways
 - Vehicle roadway and parking
 - Internal floors

* recycled glass consists of highly selected postconsumer glass and highly selected production scrap/co-products.