

**FOAMGLAS® TAPERED F**

Page: 1

Date: 12.03.2018

Supersedes: 03.07.2017

www.foamglas.com



FOAMGLAS® TAPERED F consists of FOAMGLAS® F slabs which are tapered across their width, or sometimes their length. A central arrow stamped onto the top surface indicates the direction of fall.

**Form of delivery**

length x width [mm]	600 x 450						
average thickness [mm]	60	70	80	90	100	110	120
length x width [mm]	600 x 450						
average thickness [mm]	130	140	150	160	170	180	

Standard angles of inclination:

1.1%, 1.3%, 1.7%, 2.0%, 2.8%, 3.0%, 3.3%, 4.0%, 4.4%, 5.0%, 5.6%, 6.7%.

Other dimensions and thicknesses are available on request.

**General FOAMGLAS® Cellular Glass Insulation characteristics**

- Description : FOAMGLAS® Insulation is manufactured from specially graded recycled glass (≥ 60%)\* and natural raw materials which are available in abundant supply (sand, dolomite, lime...). The insulation is totally inorganic, contains no ozone depleting propellants, flame resistant additives or binders. Without VOC or other volatile substances.
- Reaction to fire (EN 13501-1) : Material complying with Euroclass A1, non-combustible, no toxic fumes
- Service temperature limits : from -265°C to +430°C
- Water vapour resistance (EN ISO 10456) :  $\mu = \infty$
- Hygroscopicity : zero
- Capillarity : zero
- Melting point (cf DIN 4102-17) : >1000 °C
- Thermal expansion coefficient (EN 13471) :  $9 \times 10^{-6} \text{ K}^{-1}$
- Specific heat (EN ISO 10456) : 1000 J/(kg·K)

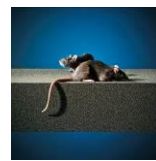
**FOAMGLAS® characteristics**



Time-tested thermal performance



Waterproof



Resistant to attack



High compressive strength



Acid resistant / chemical resistant



Non-combustible



Impervious to water vapour



Dimensionally stable



Ecological



Radon protection



# FOAMGLAS<sup>®</sup> TAPERED F

Page: 2

Date: 12.03.2018

Supersedes: 03.07.2017

www.foamglas.com

## 1. Product characteristics according to EN 13167<sup>1)</sup>

Density ( $\pm 10\%$ ) (EN 1602)	: 165 kg/m <sup>3</sup>
Thickness, average (EN 823) $\pm 2$ mm	: from 60 to 180 mm
Length (EN 822) $\pm 2$ mm	: 600 mm
Width (EN 822) $\pm 2$ mm	: 450 mm
Thermal conductivity (EN ISO 10456)	: $\lambda_D \leq 0,050$ W/(m·K)
Reaction to fire (EN 13501-1)	: Euroclass A1
Point load (EN 12430)	: PL $\leq 1,0$ mm
Compressive strength (EN 826 annexe A)	: CS $\geq 1600$ kPa
Bending strength (EN 12089)	: BS $\geq 550$ kPa
Tensile strength (EN 1607)	: TR $\geq 200$ kPa

<sup>1)</sup> CE-marking ensures conformity with the mandatory essential requirements of CPD as mentioned in EN 13167; within the CEN Keymark certification all mentioned characteristics are certified by an empowered, notified and accredited 3<sup>rd</sup> party.

## 2. Additional product data

Thermal diffusivity at 0°C	: $3.5 \times 10^{-7}$ m <sup>2</sup> /sec
Product Conformity	: BS EN 13167 : 2001
Natureplus certificate	: 0406-1101-101-1
Green Spec <sup>®</sup> Listed	: yes

## 3. Application area

TAPERED ROOF SYSTEM, cut-to-falls insulation system for highest compressive strength requirements:

- flat roofs (f.i. trafficable decks)
- floors

\*  $\geq 60\%$  recycled glass consists of highly selected postconsumer glass and highly selected production scrap/co-products.