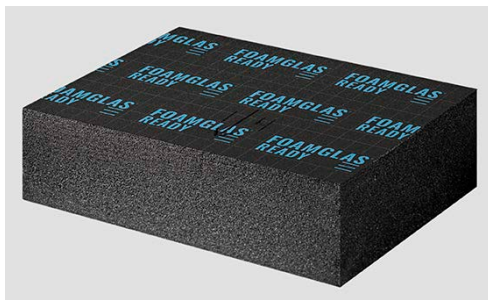




# FOAMGLAS® READY TAPERED T4+

Page: 1      Date: 01.08.2021      Supersedes: 01.01.2021      www.foamglas.com



FOAMGLAS® READY TAPERED T4+ consists of FOAMGLAS® READY BLOCK T4+ slabs which are tapered across their width, or sometimes their length. A central arrow stamped onto the top surface indicates the direction of fall.

The upper surface is coated with a bitumen layer and covered with a PE foil. This allows direct torch-on of waterproofing sheets.

**Form of delivery**

length x width [mm]	600 x 450							
average thickness [mm]	60	70	80	90	100	110	120	130

length x width [mm]	600 x 450							
average thickness [mm]	140	150	160	170	180	190	200	

Standard angles of inclination:

1.1%, 1.3%, 1.7%, 2.0%, 2.8%, 3.0%, 3.3%, 4.0%, 4.4%, 5.0%, 5.6%, 6.7%.

Other dimensions and thicknesses are available on request.

## General FOAMGLAS® Cellular Glass Insulation characteristics

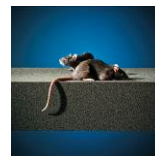
Description	: FOAMGLAS® Insulation is manufactured from specially graded recycled glass and natural raw materials which are available in abundant supply (sand, dolomite, lime...). The insulation is totally inorganic, contains no ozone depleting propellants, flame resistant additives or binders. Without VOC or other volatile substances.
Reaction to fire (EN 13501-1)	: Material complying with Euroclass A1, non-combustible, no toxic fumes
Service temperature limits	: from -265°C to +430°C
Water vapour resistance (EN ISO 10456)	: $\mu = \infty$
Hygroscopicity	: zero
Capillarity	: zero
Melting point (cf DIN 4102-17)	: >1000 °C
Thermal expansion coefficient (EN 13471)	: $9 \times 10^{-6} \text{ K}^{-1}$
Specific heat (EN ISO 10456)	: 1000 J/(kg·K)
FOAMGLAS® characteristics	:



Time-tested thermal performance



Waterproof



Resistant to attack



High compressive strength



Acid resistant / chemical resistant



Non-combustible



Impervious to water vapour



Dimensionally stable



Ecological



Radon protection



# FOAMGLAS® READY TAPERED T4+

Page: 2

Date: 01.08.2021

Supersedes: 01.01.2021

www.foamglas.com

## 1. Product characteristics according to EN 13167 <sup>1)</sup> and ETA17/0903 <sup>2)</sup>

Density ( $\pm 15\%$ ) (EN 1602)	: 115 kg/m <sup>3</sup>
Thickness (EN 823) $\pm 2$ mm	: from 60 to 200 mm
Length (EN 822) $\pm 2$ mm	: 600 mm
Width (EN 822) $\pm 2$ mm	: 450 mm
Thermal conductivity (EN ISO 10456)	: $\lambda_D \leq 0,041$ W/(m·K)
Reaction to fire (EN 13501-1)	: Euroclass E (Core material Euroclass A1)
Point load (EN 12430)	: PL $\leq 1,5$ mm
Compressive strength (EN 826 annexe A)	: CS $\geq 600$ kPa
Characteristic value of compressive stress (ISO 12491:1997) <sup>3</sup>	: $\sigma_{0,05} = 633$ KPa (n=50, $\sigma_{\text{mean}} = 750$ kPa, $s_0 = 55$ kPa)
Bending strength (EN 12089)	: BS $\geq 450$ kPa
Tensile strength (EN 1607)	: TR $\geq 150$ kPa
Compressive creep (EN 1606)	: CC (1,5/1/50) 225

- 1) CE-marking ensures conformity with the mandatory essential requirements of CPR as mentioned in EN 13167; within the CEN Keymark certification all mentioned characteristics are certified by an empowered, notified and accredited 3<sup>rd</sup> party.
- 2) ETA-17/0903 in reference to EAD no. 040777-00-1201 for the intended use cellular glass boards as load bearing layer and thermal insulation outside the waterproofing.
- 3) Characteristic value of compressive stress or compressive strength, 5%-fractile value for a one-sided confidence level of 75 % under unknown or known variance using ISO 12491:1997.

## 2. Additional product characteristics

Thermal diffusivity at 0°C	: $4.2 \times 10^{-7}$ m <sup>2</sup> /sec
BRE Green Guide Rating	: A

## 3. Applications

READY BLOCK TAPERED ROOF SYSTEM, cut-to-falls insulation system:

- flat roofs (cold bonding on concrete using PC® 500)
- metal and special roofs
- belowgrade floors and walls
- interior insulation, floors

Insulation system allowing for torch-on roofing.