

PC[®] F anchor Mechanical fastening

Page: 1

Date: 31.03.2015

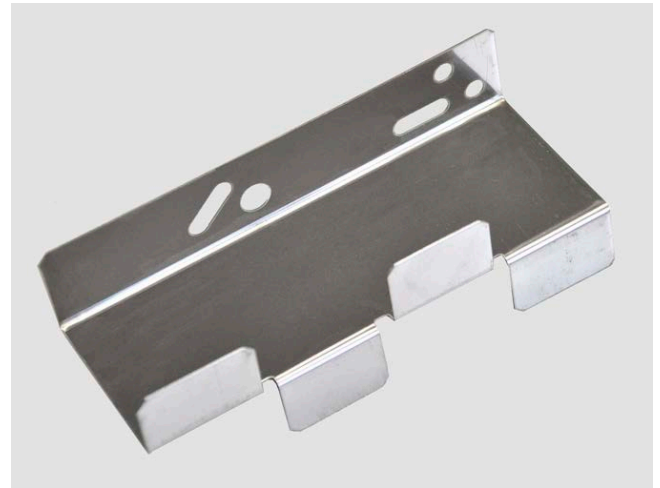
Replaced: 31.02.2015

www.foamglas.com

1. Description and area of application

PC[®] F anchors made from stainless steel (1.4301) are designed to eliminate thermal bridging when fastening FOAMGLAS[®] slab or boards to walls, ceilings and roofs.

The mechanical fastening is carried out with a screw-nail which remains covered. This prevents the vapour-proof FOAMGLAS[®] layer from being penetrated. The system remains free from thermal bridging.



2. Application

2.1 Preparation of the substrate

The substrate must be supporting and suitable to accept screw-nail anchors.

Suitable substrates include:

- concrete and solid masonry.
- Advice should be sought from specialist fixing suppliers for fixing to hollow stone or perforated brick walls/ceilings.

2.2 Preparation of the product

The PC[®] F anchors in the sizes 0, 1 and 2 are supplied with one screw-nail per anchor / thermally broken sleeve and are therefore immediately ready for the mechanical fastening of the FOAMGLAS[®] slabs or boards.

Size 0, base height 20 mm, for insulation thickness 40 mm

Size 1, base height 30 mm, for insulation thickness 50 – 80 mm

Size 2, base height 60 mm, for insulation thickness from 90 mm

2.3 Application procedure

PC[®] F anchors in the sizes 0/1/2 are laid in accordance with the laying diagram (see back page):

Consumption wall area: 2 units/m² (at every other T junction in slab or board row)

Consumption ceiling area: 4 units/m² (at every other T junction in slab or board row)

The PC[®] F anchors are pressed into the front of the T junction of the insulation plates and fastened to the support with a screw-nail anchor. Drill hole for screw-nail anchor: Ø 6 mm, drill depth about 45 mm.

The stainless steel PC[®] F anchor grips to half the insulation thickness, ensuring thermal bridging is eliminated. Each PC[®] F anchor has a pull-out strength of approx. 250 N per anchor (regardless of type of substrate).

PC[®] F anchor Mechanical fastening

Page: 2

Date: 31.03.2015

Replaced: 31.02.2015

www.foamglas.com

3. Type of delivery and storage

Cardboard box with 100 PC[®] F anchor units each in the sizes 0, 1 and 2, incl. knock-in screw and dowel

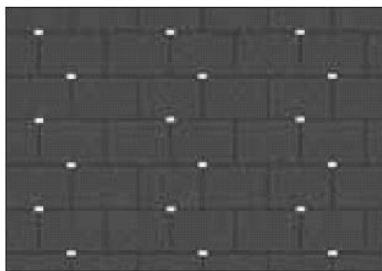
Store dry and protected from moisture.

4. Consumption

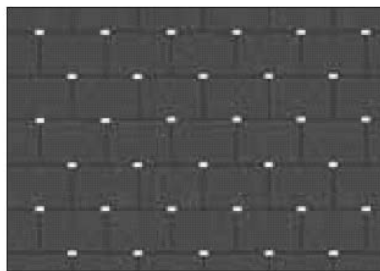
On walls: approx. 2 PC[®] F anchor units per sqm

On ceilings: approx. 4 PC[®] F anchor units per sqm

Wall:



Ceiling:



5. Key data

Type	Stainless steel 1.4301 (EN 10088-2)
Basis	Stainless steel
Thickness	0.7 mm
Surface quality	2 B
Tolerances standard	EN ISO 9445: 2006

Additional information can be found in our technical data sheets (TDS). Our liability and responsibility are guided exclusively by our general terms and conditions and are not expanded by the statement of our technical documents nor by the advice of our technical field service.